



9 WATER SUPPLY & DISTRIBUTION SYSTEM MASTER PLAN UPDATE

An important component in land use planning is ensuring that necessary services, including a plentiful and safe water supply, are available within a community. Consequently, Johnson and Anderson, Inc., consulting engineers, developed the *Charter Township of White Lake Water Supply and Distribution System Master Plan Update – July 2005* to address White Lake’s water needs over the next 10 years. The Master Plan includes, but is not limited to, an analysis of the following items: location and size of the water distribution network, based on the anticipated population density; an evaluation of how future demands can be addressed within the existing Plan; and wellhead protection issues to ensure a safe water supply. Currently, the Township’s water system serves approximately 1,550 residential and commercial customers from 12 wells at 6 sites within the community.

Based on the importance of providing a quality water system, the *Water Supply and Distribution System Master Plan Update* is being incorporated into this Master Plan by reference.

A map of the water system, excerpted from the document, is located on the following page.

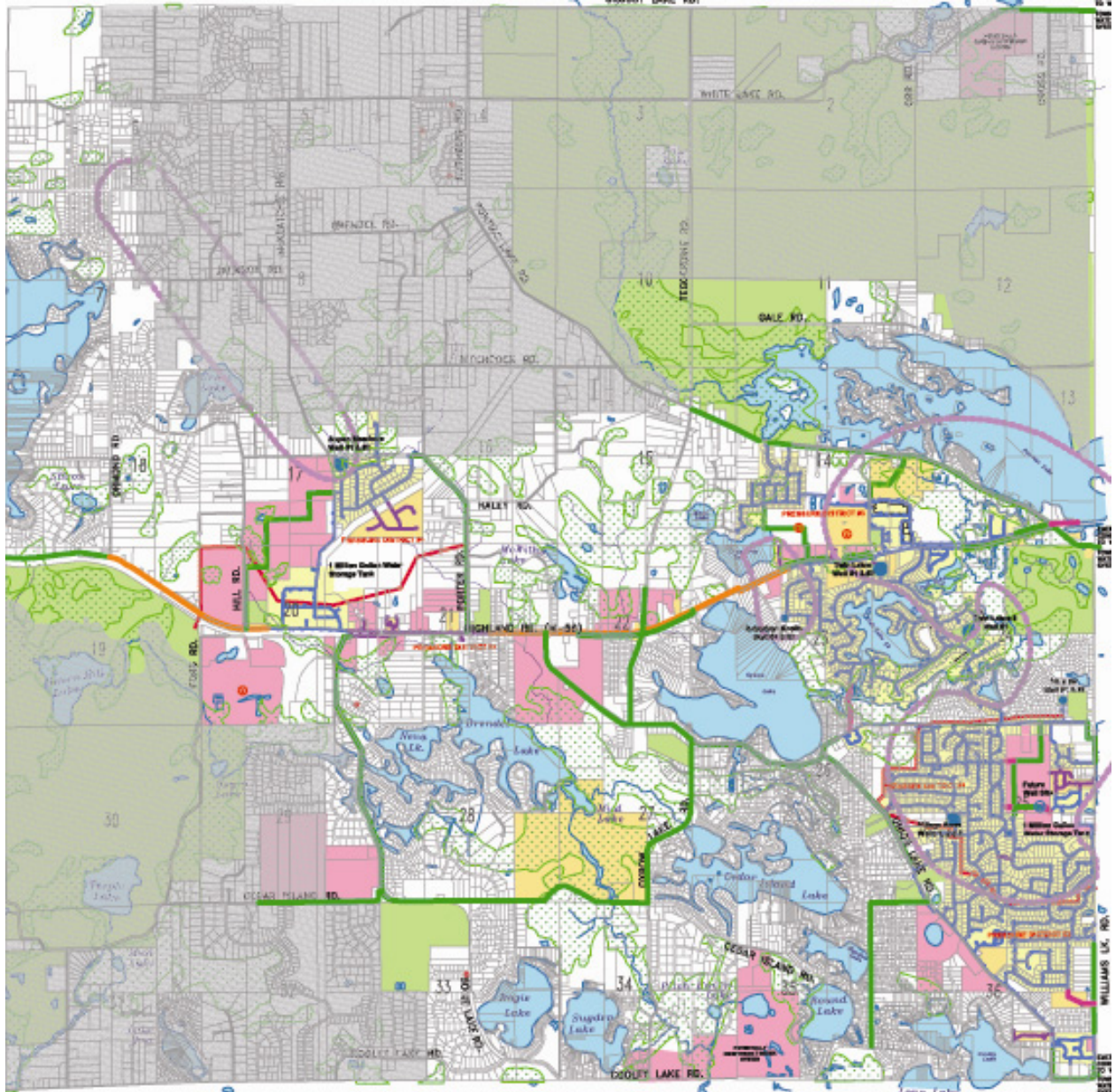


FIGURE 6
Charter Township of White Lake
WATER SYSTEM MASTER PLAN
 Oakland County, Michigan

JULY 2008

JA Johnson & Anderson, Inc.
 CONSULTING ENGINEERS
 2000 S. HARRIS LANE, SUITE 200
 TROY, MI 48063-1000
 (313) 981-1000



NOTE: Parcel boundaries as seen on platting/Oakland County Department of Planning & Development. Lake boundaries were provided by ORS & Co., Michigan Department of Natural Resources. Modified boundaries were approved through the White Lake Township Ordinance Plan. Johnson & Anderson, Inc. makes no guarantee as to the accuracy of the information. The greatest care has been taken to obtain the information presented in this plan.

LEGEND

- Existing Water Main
- Proposed Water Main (Under Review or Construction)
- Future 8" Water Main
- Future 12" Water Main
- Future 16" Water Main
- Parcel Boundary
- Wellhead Protection Area
- Section Number
- Pressure District Boundary
- On-Site Fire Suppression System
- Existing Developments with Water Service
- Proposed Developments & Existing Developments Expected to Connect to the Water System
- Future Development Areas & Existing Developments That May Connect to the Water System
- Public Lands (Park, Schools, etc.)
- Bodies of Water
- Area Outside of Sanitary Service Area
- Well Isolation Area
- Wellhead Approx. Location
- Private Water System for Manufactured Home Connectivity